

## Exhibitors (Static Display)

- Loudoun County Health Department
- Loudoun Watershed Watch
- Loudoun Wildlife Conservancy
- Piedmont Environmental Council
- US Environmental Protection Agency
- Poster, Poem & Essay Contest Award Ceremony at noon

## Outdoor Activity Stations provided by:

- Audubon Naturalist Society
- Loudoun County Building & Development
- Loudoun County Department of General Services
- Loudoun County Sanitation Authority
- Loudoun Soil and Water Conservation District
- Loudoun Watershed Watch
- Loudoun Wildlife Conservancy
- Northern Virginia Reptile Rescue
- Piedmont Environmental Council



## Amazing Soda Fountain Demo

by: **Mr. Jerome Peck**  
Just for fun!

You don't want to miss this extremely awesome exploding experiment in surface tension and nucleation as Seneca Ridge science teacher, Mr. Peck drops Mentos candies into 100 2-liter bottles of soda.



Extra Credit  
Stamp



# Fifth Annual "Family Stream Day"

**October 14, 2006**

**10:00 am to 3:00 pm**

hosted by Seneca Ridge Middle School  
98 Seneca Ridge Drive, Sterling, VA 20164



Family Stream Day coincides with  
**World Water Monitoring Day** (10-18-06)

for more info visit [worldwatermonitoringday.org](http://worldwatermonitoringday.org)

Your **PASSBOOK** to 9 **x-stream-ly awesome**  
stations and two extra events!

Passbook Holder's Name

Visit [loudounwatershedwatch.org](http://loudounwatershedwatch.org)

# Station 1: Your Watershed Address

by: Piedmont Environmental Council  
[www.pecva.org](http://www.pecva.org)

What is a watershed? Do you know your "watershed address?" Check out the watershed maps of Loudoun County and mark your address with a pin. Local streams carry runoff to the Potomac River and Chesapeake Bay. Discover what you can do to protect Loudoun's streams.



Pick up information on how you can help and get involved!

Stamp

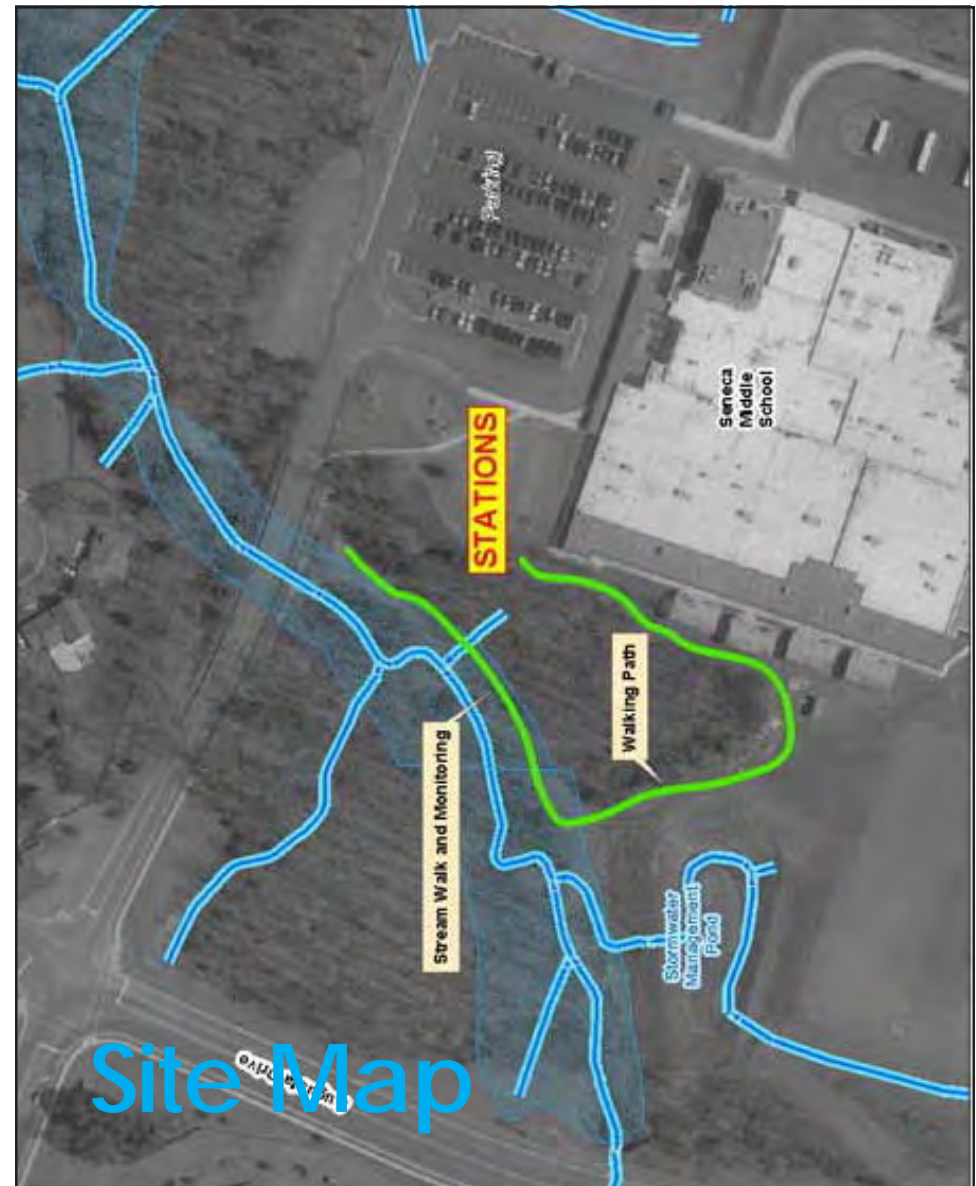
# Station 2: Down the Storm Drain

by: Loudoun County General Services  
[www.loudoun.gov/genserv/stormwater](http://www.loudoun.gov/genserv/stormwater)

Do you know where rain and melted snow go when they runoff of your house and yard? Alex the Frog has an exciting video clip "Water Down the Drain" to show you. Find out what happens to stormwater when forests and meadows are developed into housing and shopping areas. Discover how stormwater is managed to remove pollution, protect our streams and keep our homes and roads safe from flooding. Take a walk down by the pond and learn to identify the important parts of a stormwater pond. A free rain poncho will help you keep track of the stormwater in your neighborhood.



Stamp



## Acknowledgements

Loudoun Watershed Watch would like to thank Loudoun County Public Schools, Seneca Ridge Middle School Assistant Principal Teresa Buhl, Science teacher Mr. Jerome Peck, and the SRMS PTO for their help and support at this event.

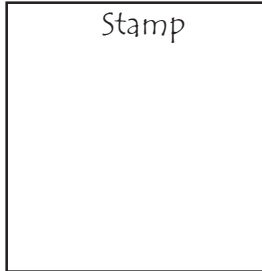
## Station 8: Wetland Habitat

by: Loudoun Soil and Water Conservation District  
[www.loudounvaswcd.org](http://www.loudounvaswcd.org)

Plants and animals of a wetland habitat are unique. Learn how important a streamside forest buffer is to the quality of a community's water. Discover the natural life within the urban stream corridor. Identify local trees and shrubs and define their functions. Find out about the Riparian Buffer and how it works for you.



Stamp



## Station 9: Reptiles, Rivers & You

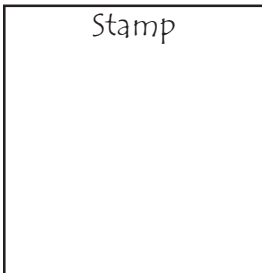
by: Northern Virginia Reptile Rescue  
[www.boxturtle.org](http://www.boxturtle.org)

Meet native reptile species and discuss how to treat reptiles you may find, what to do if they are hurt, or in danger because of construction activity. Get tips on being a responsible reptile pet guardian.

Northern Virginia Reptile Rescue (NVRR) helps conserve native reptiles and amphibians. As licensed wildlife rehabilitators they take in injured and displaced native species, treat, and release them back into the wild.



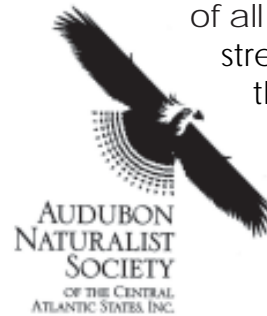
Stamp



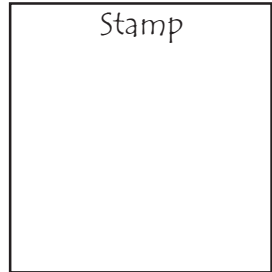
## Station 3: Nature Crafts and Games

by: Audubon Naturalist Society - Rust Sanctuary  
[www.audubonnaturalist.org](http://www.audubonnaturalist.org)

Come enjoy stream critter activities and crafts. Make an aquatic food chain or fun frog hat to wear. Children of all ages can play water and stream games to learn about the life styles of water insects.



Stamp



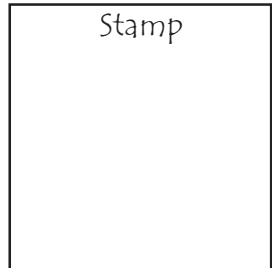
## Station 4: Nature's Filters

by: Loudoun County Building and Development  
[www.loudoun.gov/b&d/water.htm](http://www.loudoun.gov/b&d/water.htm)

Nature provides natural filters that help clean rainwater before it flows into our streams, ponds, lakes, and rivers. Wetlands are one of nature's most efficient filters. Acting almost like a sponge Wetlands absorb pollutants and excess nutrients that could harm stream ecology and water quality. Learn to identify a wetland and how it helps to keep our streams clean while providing a home to specially-adapted plants and wildlife. Simulate the effects of a wetland in an interactive model watershed. Identify soils, plants, and wildlife that typically occur in wetlands.



Stamp

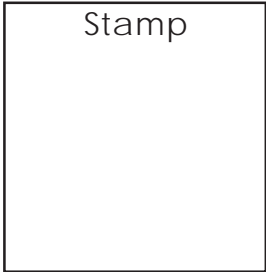


# Station 5: Drain Dump Stumper

by: Loudoun County Sanitation Authority  
[www.lcsa.org](http://www.lcsa.org)

Are You Poisoning Your Water? Play the Drain Dump Stumper Game.

The most common and likely cause of water supply contamination comes from the daily, collective effects of thousands of well-meaning consumers who dump dangerous materials down their drains. Try your luck at the Drain Dump Stumper Card Game and learn which items are safe for the drain and which are not.

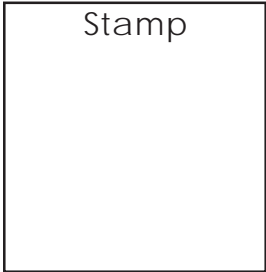


# Station 7: What's Buggin' Our Streams

by: Loudoun Wildlife Conservancy  
[www.loudounwildlife.org](http://www.loudounwildlife.org) & [www.loudounwatershedwatch.org](http://www.loudounwatershedwatch.org)

Aquatic insects live in streams under rocks and provide food for fish, turtles and frogs. Lots of insects mean a healthy stream. Loudoun Wildlife Conservancy and Loudoun Watershed Watch monitor aquatic insects and other water quality indicators throughout Loudoun County. Come see live aquatic insects and test for water quality. Learn how volunteers monitor streams and coordinate

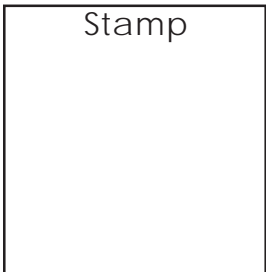
their results with county government and the Virginia Department of Environmental Quality.



# Station 6: Erosion & Sediment Control

by: Loudoun County Building and Development  
[www.loudoun.gov/b&d/erosion.htm](http://www.loudoun.gov/b&d/erosion.htm)

Sediment is the # 1 pollutant of surface water and greatly affects our water quality. Learn how the County is preserving and protecting our water resources and the Chesapeake Bay, also learn how citizens impact water quality and the everyday things you can do to help.



# Scheduled Nature Walks

by: Loudoun Wildlife Conservancy  
[www.loudounwildlife.org](http://www.loudounwildlife.org)

Take a short walk to explore nature in the forest and wetland areas. Discuss the native plants and animals that might be found in a wetland habitat. Find out how important they are and how they impact our water quality.



Nature Walks Depart from Station 7 at  
11:30 AM  
1:30 PM  
2:30 PM

